

## PRODUCT SPECIFICATION

Sephra Stroopwafel Pockets

Version: Spec-Sheet-Stroopwafel-Pockets-v1

### General Information

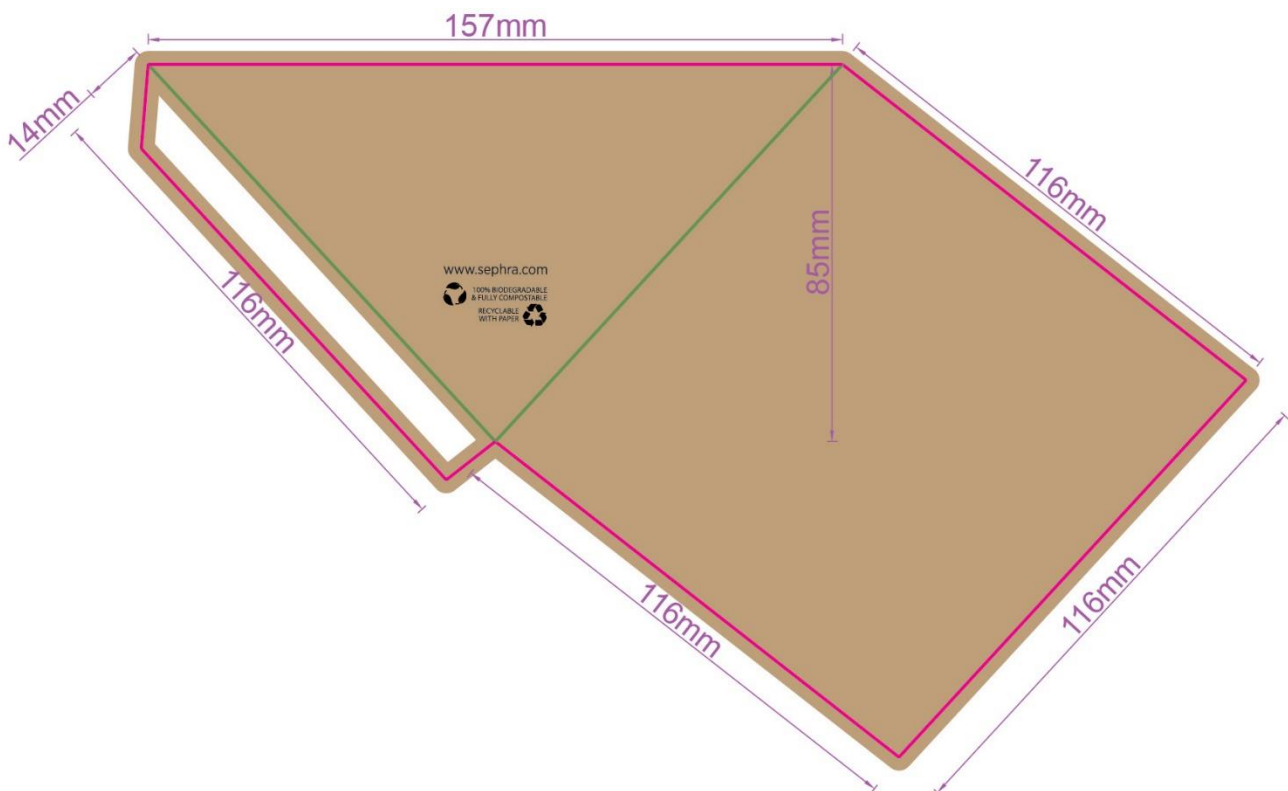
**Product Description:** Paperboard pocket tailor-made for convenient takeaway packaging of stroopwafels.

**Product Code:** STROOPPOCKETS25, STROOPPOCKETS1000

**Country of Origin** China

**Material:** Food Grade 215GCU Paperboard

### Dimensions



## Features

Description	(Y/N)
Custom Print Available	Y (Contact us for details on Minimum Order Quantity and Quotation)
Foldable for Storing	Y
Stackable for Storing	N/A

## Environmental Information

Description	(Y/N)
Sustainable Materials	Y
Recyclable	Y
Biodegradable	Y
Compostable	Y

## Packaging Information

Quantity Description	Approx Weight	Approx Dimensions
Pack of 25	0.15kg	235mm x 120mm x 250mm
Case of 1000	5.7kg	245mm x 245mm x 360mm